

产品特性/Product Features

- IP6K9K
- 80A 85°C
- 12-750VDC
- 1000MΩ (1000VDC) , IEC 60664-1

		1a	
		≤1m (at 20A)	
		80A	
		2×10 ⁵	
		450V型	750V型
		1000VDC	1000VDC
		800A(320VDC)1	800A(320VDC)1
		36kW	60kW
1)		1×10 ⁻⁴ 450VDC, 80A	1×10 ⁻⁴ 750VDC, 80A
		7.5×10 ⁻⁴ 450VDC, 80A	7.5×10 ⁻⁴ 450VDC, 80A
		80A:	
2)		120A:30min	
		160A:1min	
		300A:10s	

1) 23°C, 0.6s:5.4s,

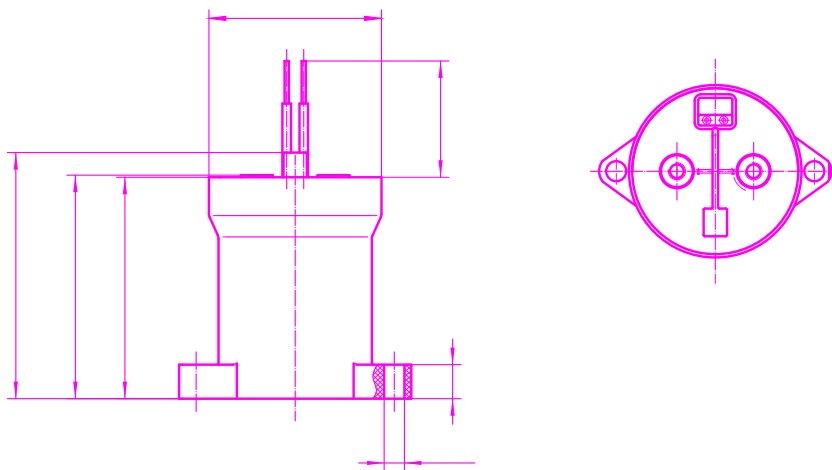
2) 85°C, 20 mm², * *

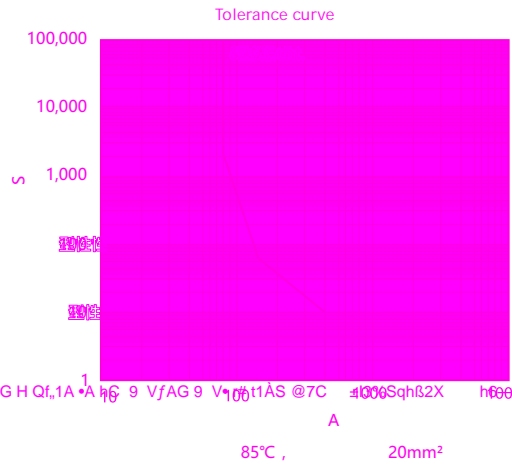
		1000MΩ(1000VDC)
		3000VAC 1min
		3000VAC 1min
()		≤30ms
()		≤10ms
		196m/s ²
		490m/s ²
		10Hz ~ 500Hz 49m/s ²
		5% ~ 85%RH
		-40°C ~ 85°C
		5M
		225g

12	9	1.2	5.5W
24	≤18	2.4	6W
-40°C ~ 85°C)			

Technical Drawing

/Unit mm





Q@ • 0 ¼á3` n97• 0 %á3` Q@ &p • E5C` " P± r15 S @7C ~3IGC 27x t1Á± h W QifAG H Qi,1A • A h 6 9 VjAG 9 Vj06 t1ÁS @7C ±1006SqhS2X h6000&" ð > ÁÁI' † a/E' `



1

M5	3N·m~4N·m	Ø5.0~Ø5.5mm	3mm	M4螺钉	3N·m~4N·m
M8	10N·m~12N·m	Ø5.0~Ø5.5mm	3mm	M4螺钉	3N·m~4N·m

2 20mm²

3 3mm

声明/Statement:

